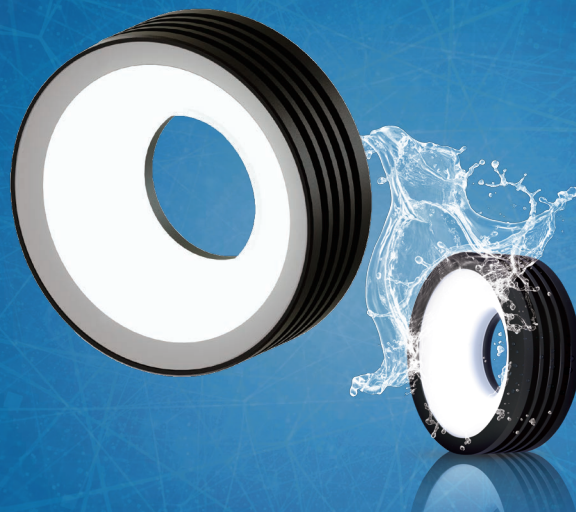


# Multi-position Ring Light IMAR series

Highly versatile with variable  
illumination distance



IP67 standard-compliant dust & water proof model is available

24V DC Models Available

## Standard Type

Model	Light Color	Power Consumption (W)	Input Voltage	SAG (※)	Power Supply	Drawing
IMAR-55□	AR	4.5	DC12V	95	ILP-30M2 (P.81) IDGB series (P.89) other, overdrive power supply etc.	1
	W	4.5		C2		
	B	4.5		C5		
IMAR-80□	AR	8.5		7F		2
	W	8		AC		
	B	8		AE		
IMAR-110□	AR	12		87		3
	W	13.5		AC		
	B	13.5		AE		
IMAR-130□	AR	14.5		80		4
	W	16		A6		
	B	16		A9		
IMAR-160□	AR	20		7A		5
	W	20		A5		
	B	20		79		
IMAR-200□	AR	24		7E		6
	W	24		AA		
	B	24		B2		
IMAR-250□	AR	28.8		8C		7
	W	28.8		BA		
	B	28.8		85		

## Dust & Waterproof specification (IP67 standard-compliant)

Model	Light Color	Power Consumption (W)	Input Voltage	SAG (※)	Power Supply	Drawing
IMAR-90□-WP	AR	8.5	DC12V	7F	ILP-30M2 (P.81) IDGB series (P.89) other, overdrive power supply etc.	8
	W	8		AC		
	B	8		AE		
IMAR-140□-WP	AR	14.5		80		9
	W	16		A6		
	B	16		A9		

□ represents light color (AR=Red, W=White, B=Blue)

\*Input voltage is 12 V DC, but 24 V DC models are also available.

\*Please refer page 80 to confirm the details of DC 24V models.

\*The SAG value indicates the maximum voltage setting for SAG power supplies. For details, see page 101.

## Functional Characteristics

### FEATURES

#### ① Dense concentration of highintensity power LEDs

High-intensity power LEDs are mounted densely to provide extremely bright, more even ring lighting. A special diffusion plate makes it possible to project diffuse light unaffected by ghost images produced by LED elements.

#### ① Heat-dissipating fins

An original heat-dissipating structure provides drastically improved heat dissipation.



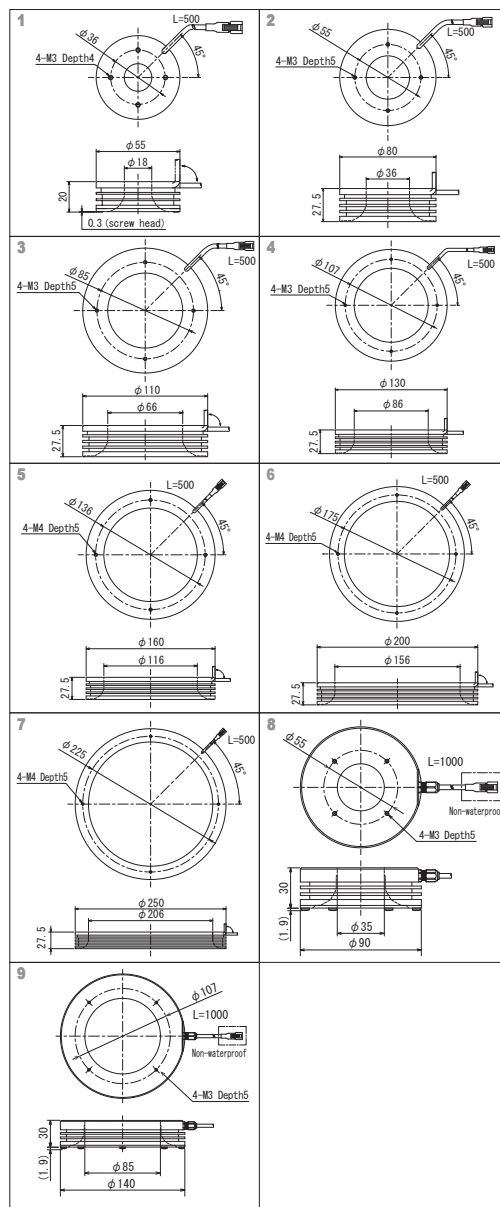
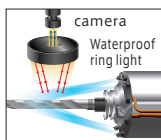
## International Protection code

"6" for the first digit of the protection code indicates the degree of protection from the following:

•Dust-tight

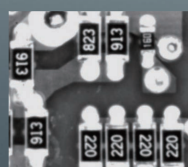
"7" for the second digit of the protection code indicates the degree of protection from the following:

•Protection against effect of immersion in water under defined conditions of pressure and time  
•The device (with a height less than 850 mm) can be located 1,000 mm below the surface of the water for 30 minutes consecutively



## Effect

Lighting effects are altered by changing lighting height. Light used: IMAR-80W



WD=20mm  
Printing clearly emphasized



WD=60mm  
Wiring pattern and electrodes emphasized



WD=100mm  
Only electrodes emphasized

## LIGHTING STRUCTURE

